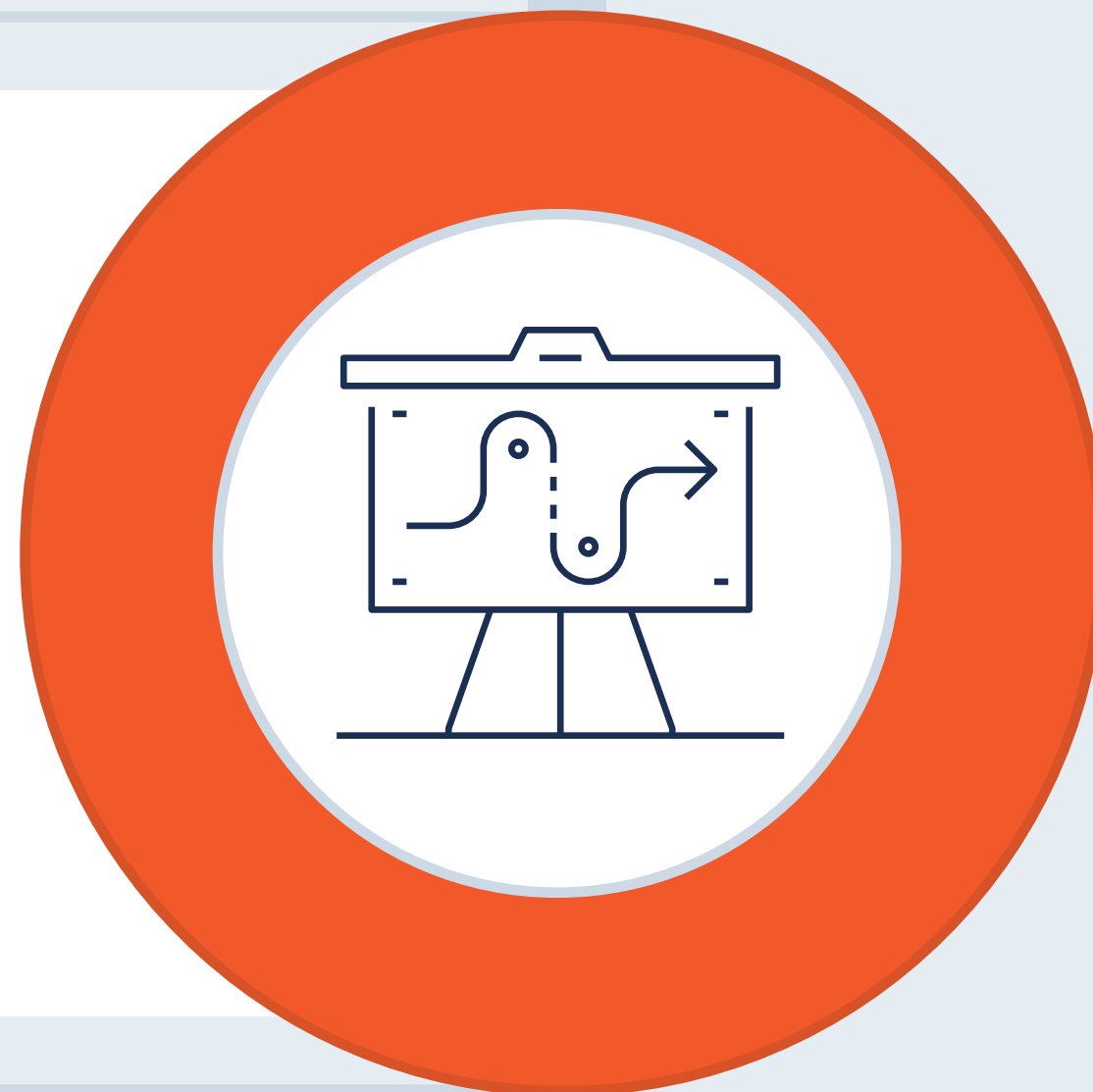


Medical Insights Health Check: How effective is your current approach?

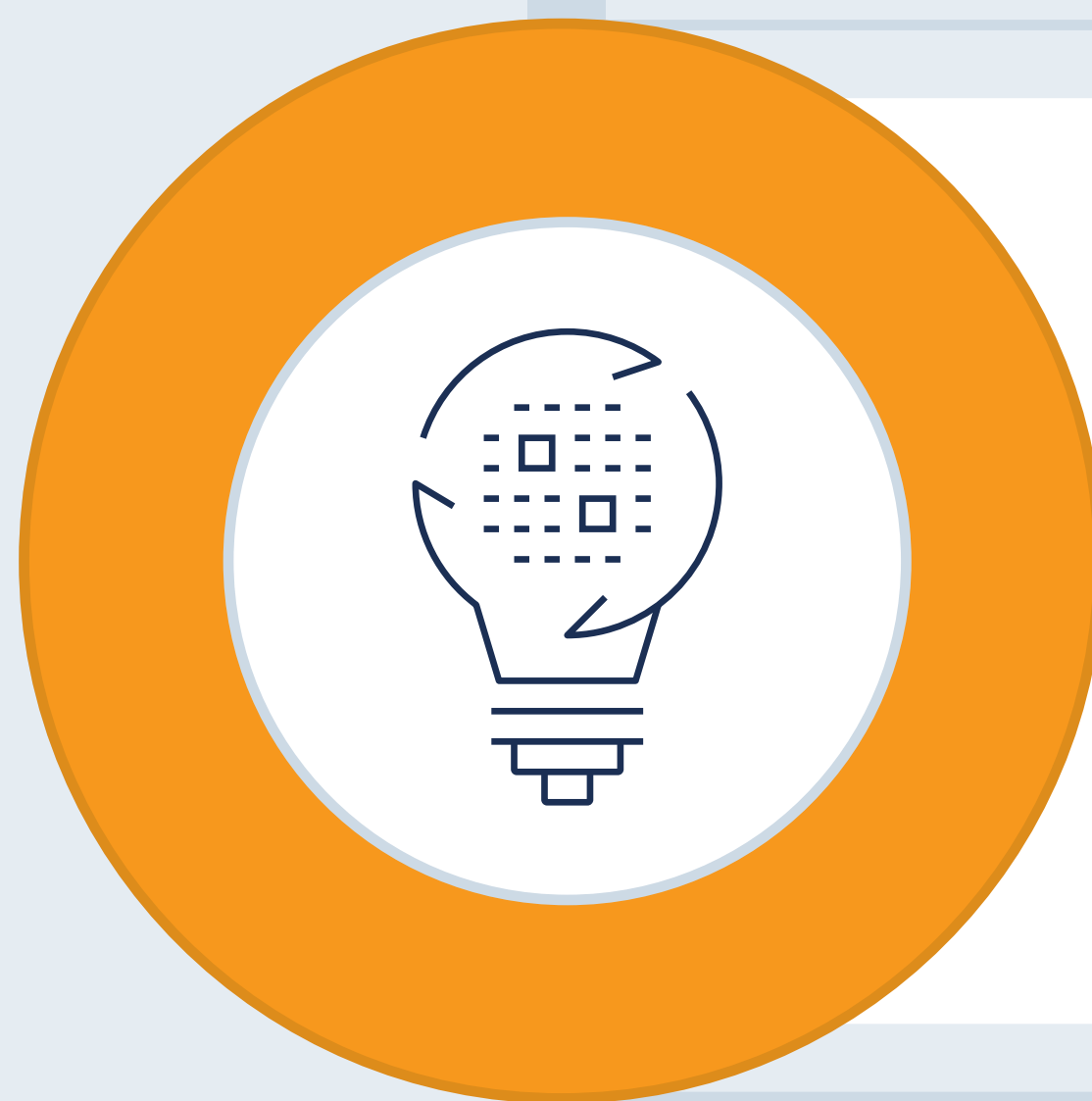
STRATEGY

- Have you established up-to-date priorities for gathering insights?
- Does everyone know about it?
- How often is your medical organization's metadata reviewed and updated?
- Are insights capture and analysis locations integrated into the workflow of the medical teams?



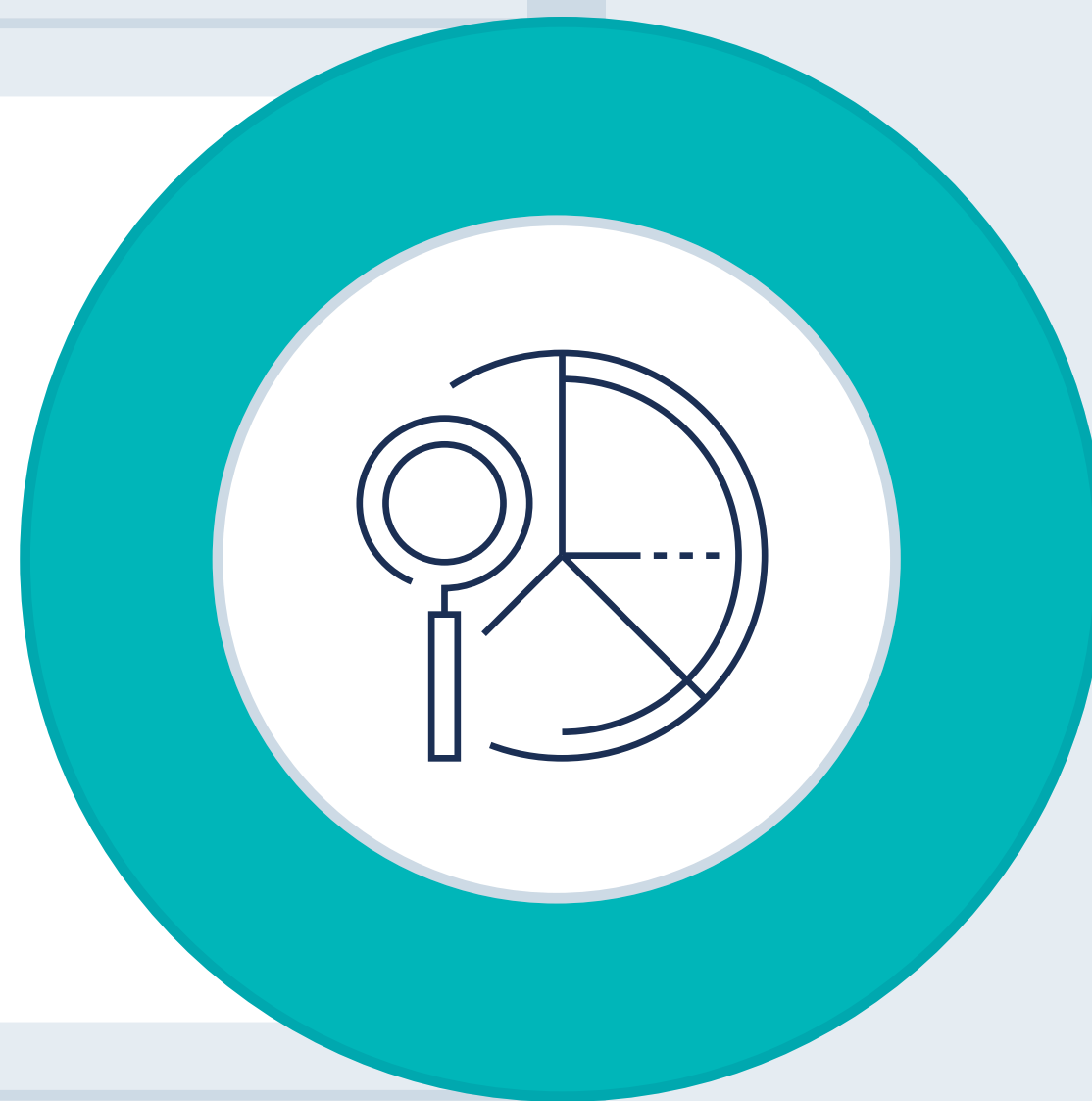
CAPTURE

- How much MSL time is spent capturing medical insights?
- Are the insights gathered aligned with the medical strategy and current needs of the organization?
- How accurate is the MSL tagging using available metadata?



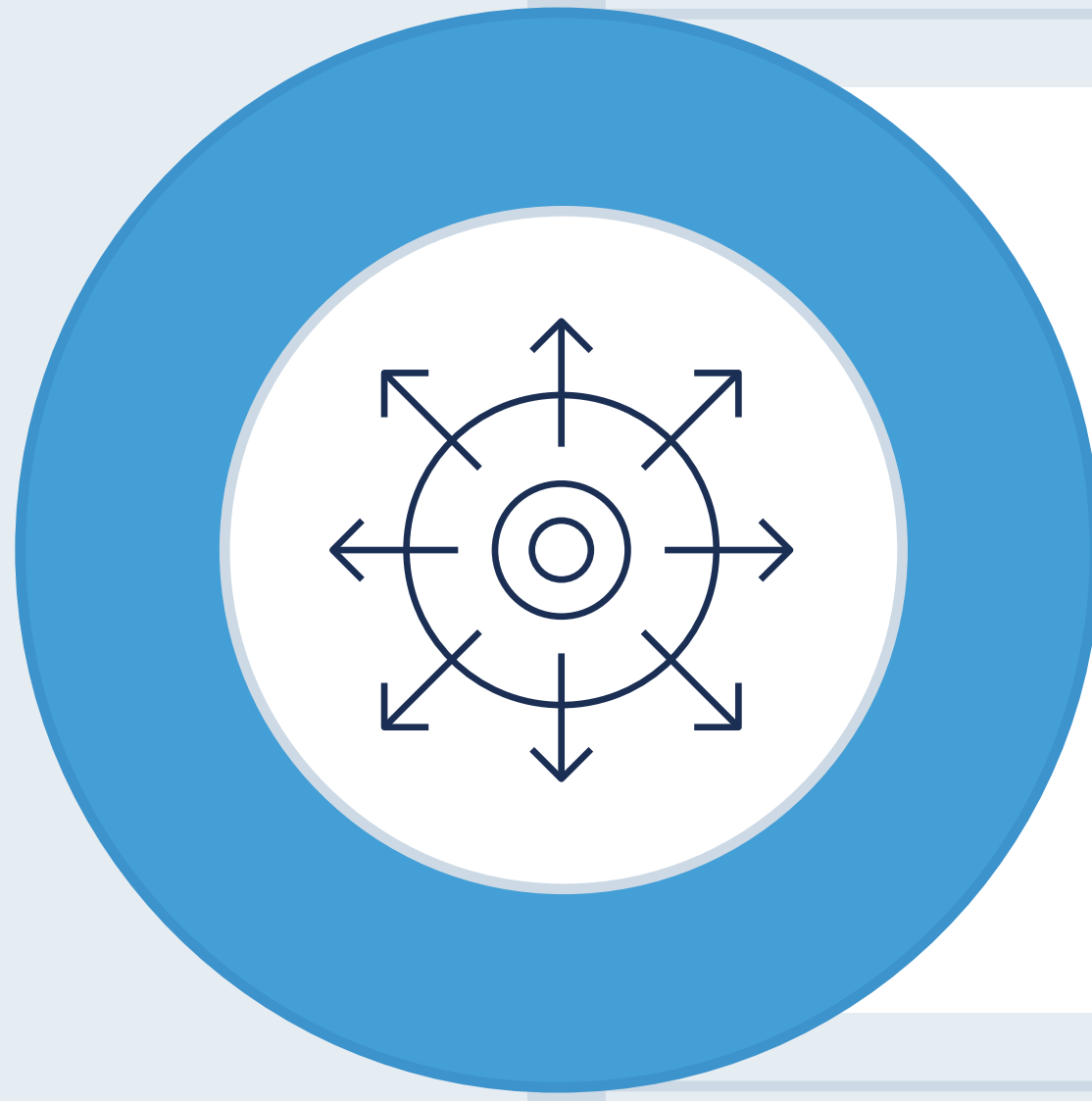
ANALYSIS

- How much medical time is spent analyzing medical insights?
- Is your metadata useful during analysis?
- How long does it take to receive and process insights?
- Where are insights stored and how accessible are they?



DISSEMINATION

- How often are insights shared within medical and other functions?
- Is there a standardized reporting format and channel?
- Are actions or feedback routinely documented?
- How quickly are gaps in strategy or knowledge addressed?



WHAT ARE YOUR CURRENT AND TARGET TIMES FOR...

- ... Addressing priorities to resolve gaps in strategy?
- ... Capturing medical insights?
- ...Analyzing medical insights?
- ... Disseminating actionable medical insights?



Learn how Link Medical Insights redefines the insights journey, accelerating the right insights to the right people